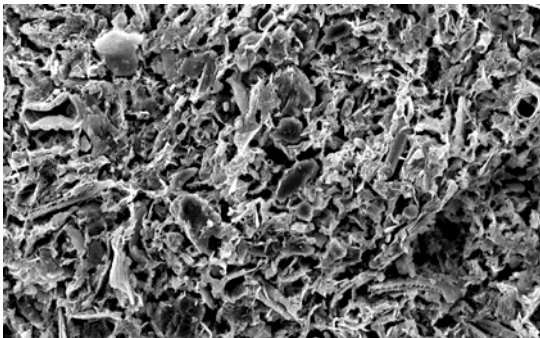
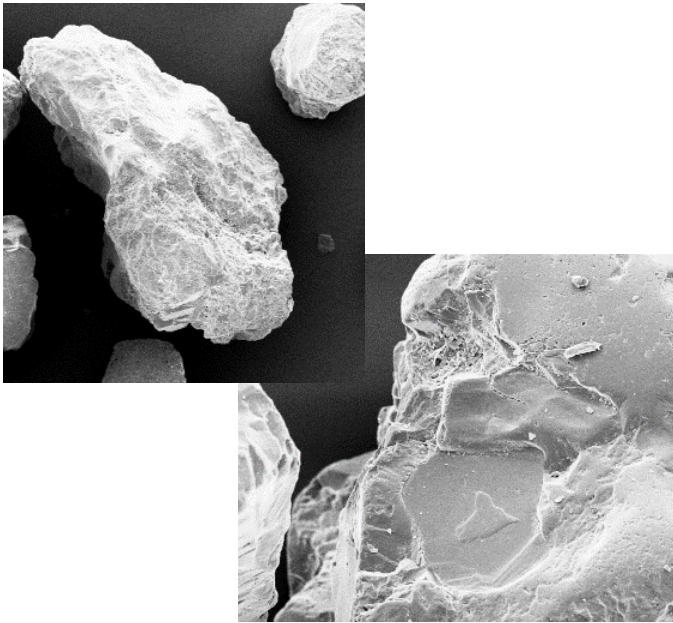


International Symposium Geomechanics from Micro to Macro IS-Cambridge

1-3 September 2014, Cambridge, UK

This conference organised by ISSMGE TC105 (Geomechanics from Micro to Macro) is the premiere forum for the dissemination of new advances in the micro-macro relations of soil behaviour and its modelling.



The topics covered at the conference are
Micro and Macro Characterization
Experimental techniques, Visualization of particle movement, Particle shape, size and grading, Friction and contacts

Micro-Macro Relationships
Stress-strain relationship, Yielding and failure, Stress-dilatancy, Grain crushing, Creep and rate effects, Shear bands/compaction bands, Vibrations/dynamics, Granular flow, Erosion

Micro-Macro Modelling
Discrete element modelling, Micromechanics, Continuum models with micro-characterisation, Large deformations, Fluid coupling

Engineering Applications
In-situ tests, Slope stability, Foundations, Landslides and granular flow, Tunnelling, Hydraulic engineering, Railway and pavement engineering, Reservoir geomechanics, Offshore engineering

Abstract deadline: 30 November 2013
Full paper deadline: 28 February 2014

The abstracts and papers are to be submitted from the conference website
<http://is-cambridge.eng.cam.ac.uk>

The conference proceedings will be published by CRC Press. Selected papers will be published in a special issue of "Computers and Geotechnics", "Soils and Foundations" and "Granular Matter".



For further details, please contact:
Professor Kenichi Soga
University of Cambridge
Trumpington Street
Cambridge, CB2 1PZ UK
E-mail: issmge-tc105@eng.cam.ac.uk

is-cambridge.eng.cam.ac.uk